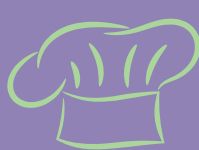


our patch

St Peter Apostle Primary School

We are thrilled to be introducing Our Patch to St Peter Apostle Primary School. Our Patch is a fresh provider in the education and care space, sprouting from a dream to create entirely unique spaces that gives children voice and offers them a safe place of wonder in which to GROW.

The St Peter Apostle Primary School Patch will provide children with endless opportunities to build confidence and resilience through activities like Outdoor Sports, Arts & Craft, Music and Cooking. Delicious and nutritious breakfast and afternoon tea is included and will ensure children are satisfied and excited to see what is on the menu for the next session.



Location:

St Peter Apostle Primary School
16-38 Guinane Ave, Hoppers Crossing VIC 3029

Contact:

1300 018 310 or info@ourpatch.education

Hours of Operations

Before School Care – 7:00am to 8:45am
After School Care – 3:15pm to 6:30pm
Pupil Free Days – 7:00am to 6:30pm

	Program Fees without Child Care Subsidy		Program Fees with maximum* Child Care Subsidy	
	Permanent	Casual	Permanent	Casual
Before School Care	\$22.00	\$24.50	\$4.02	\$6.52
After School Care	\$24.00	\$26.50	\$3.48	\$3.84
Pupil Free Day	\$78.00	\$80.50	\$11.31	\$11.67

*Maximum Child Care Subsidy of 90%. To check your eligibility please check your MyGov account or visit Centrelink's Payment and Service Finder.

Bookings made within 48 hours incur an additional fee.

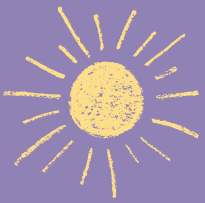
Cancellations within 24-48 hours incur a 25% charge of the session fee.



To register and book visit:

<https://ourpatch.education/before-and-after-school-care/>





Child Care Subsidy

Child Care Subsidy, also referred to as CCS, offers different levels of financial support to assist families with the costs associated with childcare, including Before School Care, After School Care and Holiday Care. This means you can get up to 90% of your session fees covered by CCS. CCS is paid directly to the child care provider to reduce the fees you have to pay.

How it is calculated

How much you receive depends on your individual circumstances and is calculated using the following information:

- 1 Your combined family income
- 2 Your level of activity
- 3 Your childcare providers hourly rate

You can use the Centrelink Payment and Service Finder to calculate your estimated entitlement.

To obtain the Child Care Subsidy

- 1 Have or register for a myGov Account. If you don't have a myGov account go to <https://my.gov.au/> and select Create a myGov account.
- 2 Once you are in your myGov Account, link your account to Centrelink and complete the registration process.
- 3 Complete your Child Care Subsidy Assessment
- 4 Confirm your enrolment with current provider

At the time of enrolling your child into Before, After or Holiday Care you will be required to provide a Customer Reference Number (CRN), issued once you have registered your MyGov account and linked it to Centrelink, along with the account holder and child/ren's date of birth.

Once you have booked your child into care you must then log back into your MyGov account to confirm your bookings with the provider.

All steps must be followed to ensure that you receive your CCS entitlements and not charged the full fees.

For more information on the Child Care Subsidy or to work out how much you can get go to: <https://www.education.gov.au/childcare-FAQ> or phone the Family Assistance Office on 13 61 50